

## WHEEL RESTORATION KIT

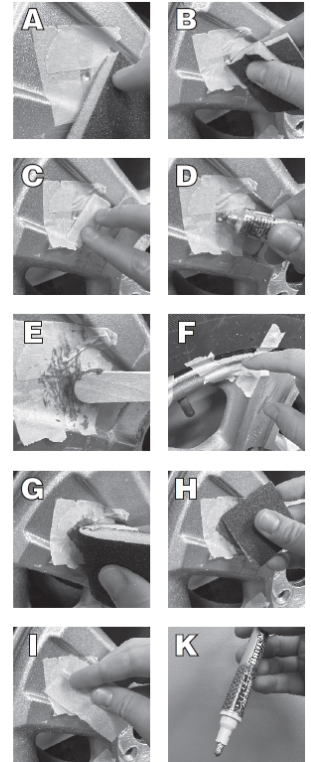
Read all directions before beginning the restoration.

Wheel restoration may be performed on wheel with or without tire mounted and on or off vehicle. **NOTE:** Not for use on plastic wheel surfaces. Wheel restoration kit should not be used to repair structural damage such as cracked, bent or excessively rusted wheels.

DYKEM® BRITE-MARK® wheel paint marker included to duplicate your original factory finish. **Suggested:** Test on an inconspicuous area for color match. If color does not match, visit your local auto parts store for alternative wheel paint colors offered by Permatex or Dupli-Color® (Graphite, White, Clear, Bronze).

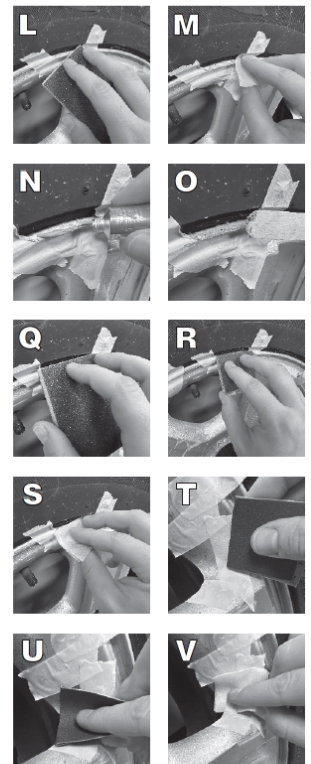
### FOR DENTS AND GROOVES (Damage from impact or scrapes)

1. Wash wheel thoroughly and dry.
2. Apply the masking tape around the problem area. (A)
3. Sand with the 150 grit sanding block around the dent scratch or groove to remove any raised edges. (A)
4. Sand inside the dent. (B)
5. Clean the repair area using the supplied alcohol towelette(s) and allow to dry. (C)
6. Open the wheel repair filler tube. Apply an ample amount to fill the dent/groove making sure that enough filler is used to fill the dent and have some material extend above the level of the wheel. (D) Use one end of the wooden applicator stick to aid in filling the dent. (E)
7. Allow the filler to dry for at least 4 hours. After 20 minutes, the vehicle may be driven during the drying time.
8. To ensure that the repair filler has dried hard, test the repair by lightly tapping with finger nail. (F) If not hard, allow to dry an additional hour and test again.
9. When the repair is hard, use the 150 grit sanding block to carefully sand the repaired area until the surface is almost even with the rest of the wheel. (G)
10. If a depression is still felt with a finger, repeat steps 4 through 9.
11. When the repair feels smooth to the touch, use the finer 320 grit sandpaper and finish hand sanding to a very smooth finish. (H)
12. Thoroughly, clean the area to be painted with the alcohol towelette and allow to dry. (I)
13. Shake the paint marker for 15 seconds. Remove cap and press down on tip for roughly 60 seconds until the paint comes to the tip of the marker. Apply as needed. (K)
14. Paint will dry to the touch within 1-2 minutes. Apply additional layer of paint to make the color darker.
15. Carefully remove any masking tape.



### FOR CURBSIDE RASH, SCUFFS AND DEEP SCRATCHES (Damage caused by hitting curb with wheel)

1. Wash wheel thoroughly and dry.
2. Carefully feel the damaged portion of the rim with your finger.
3. If the rim edge is very rough, apply the masking tape around the problem area, then sand the rim edge with the 150 grit sanding block to remove any raised edges. (L)
4. Clean the repair area using the supplied alcohol towelette and allow to dry. (M)
5. Open the wheel repair filler tube. Apply filler to smooth rough areas. (N) Use one end of the wooden applicator stick to aid in filling. (O)
6. Allow the filler to dry for at least 4 hours. After 20 minutes, the vehicle may be driven during the drying time.
7. To ensure that the repair filler has dried hard, test the repair by lightly tapping with finger nail. (P) If it is not hard, allow to dry an additional hour and test again.
8. When the repair is hard, use the 150 grit sanding block to carefully smooth out the rough area. (Q)
9. If the area is still rough, repeat steps 4 through 9.
10. When the repair feels smooth to the touch, use the finer 320 grit sandpaper and finish hand sanding to a very smooth finish. (R)
11. Thoroughly, clean the area to be painted with the alcohol towelette and allow to dry. (S)
12. Shake the paint marker for 15 seconds. Remove cap and press down on tip for roughly 60 seconds until the paint comes to the tip of the marker. Apply as needed. (T)
13. Paint will dry to the touch within 1-2 minutes. Apply additional layer of paint to make the color darker.
14. Carefully remove any masking tape.



### FOR CORROSION DAMAGE OR MINOR SCRATCHES (Damage caused by salt water or rough winters)

1. Wash wheel thoroughly and dry.
2. Apply the masking tape around the problem area. For very bad corrosion, use 150 grit sanding block. If corrosion is minimal, use the finer 320 grit sandpaper. (T)
3. Sand the corroded area with the appropriate grit sandpaper. Use only your hands and fingers to get into smaller areas. If starting with the 150 grit sanding block, finish sanding with 320 grit sand paper. (U)
4. Thoroughly, clean the area to be painted with the alcohol towelette and allow to dry. (V)
5. Shake the paint marker for 15 seconds. Remove cap and press down on tip for roughly 60 seconds until the paint comes to the tip of the marker. Apply as needed. (K)
6. Paint will dry to the touch within 1-2 minutes. Apply additional layer of paint to make the color darker.
7. Carefully remove any masking tape.